

INSULATED ROLLING DOOR

THERMISER MAX[®] DOOR

Model ESD30



TODAY'S MOST ENERGY EFFICIENT ROLLING DOOR

PERFORMANCE...TESTED AND PROVEN

Thermiser Max is built to order and best used in exterior openings where maintaining environmental separation on each side of the door is necessary. Doors meet ASHRAE[®] 90.12, 2021 IECC[®] and California's Title 24 air infiltration requirements with an independently tested value of less than 0.3 CFM/ft².

PATENTED SEALING SYSTEM

This exclusive full perimeter seal, combine with thermally broken guide construction and insulated curtains, minimizes air infiltration and thermal transference.

A GREEN, ENERGY EFFICIENT OPTION

This door delivers a 94% decrease in air infiltration compared to standard products³ and can contribute up to 38 credits in five LEED categories. A comprehensive LEED[®] package is available on our website.

REDUCES SOUND TRANSMISSION

Sound Transmission Class (STC) rating is up to 30 for the entire assembly. If an STC of 32 is desired, additional options are required. Please consult the factory for details. All configurations are evaluated per ASTM E90, based on testing a complete, operable assembly.

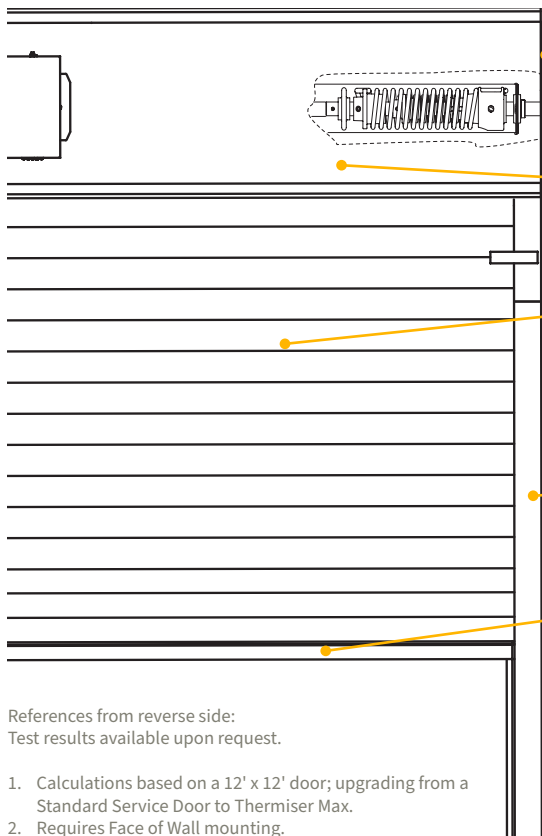
800.233.8366 | cornelliron.com

CornellCookson, LLC. is an ISO 9001:2015 registered company
05.2025

CORNELL
Innovative door solutions.[®]

INSULATED ROLLING DOOR **THERMISER MAX® DOOR Model ESD30**

STANDARD COMPONENT MATERIALS AND FINISHES



BRACKETS - Steel with powder coated finish to match curtain. Bolt to guide assembly and support counter-balance shaft and curtain.

COUNTER-BALANCE SHAFT - Steel. Supports curtain and contains torsion springs for assisting operation.

HOOD - Galvanized steel with GalvaNex™ polyester enamel finish to match curtain. Encloses the curtain and provides weather resistance at the head of the door.

CURTAIN - Galvanized steel with GalvaNex™ polyester enamel finish in Gray, Tan, White or Brown. Flame Spread Index of 0 and a Smoke Developed Index of 10 as tested per ASTM E84. The slat has an R-value of 8.0 as calculated using the ASHRAE Handbook of Fundamentals.

GUIDES - Thermally broken structural steel guides with powder coating to match the curtain. Angle assemblies bolt to the wall and support the weight of the door.

BOTTOM BAR - If width is less than 24'5", extruded aluminum supplied in mill finish. If width is greater than 24'5", steel supplied with powder coating to match curtain.

References from reverse side:
Test results available upon request.

1. Calculations based on a 12' x 12' door; upgrading from a Standard Service Door to Thermiser Max.
2. Requires Face of Wall mounting.
3. Calculated using data from an ASHRAE research report for standard coiling doors.

OPERATION AND STRUCTURAL REQUIREMENTS

Hand chain, hand crank and a variety of motor options are available.

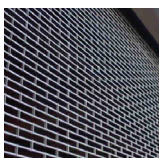
This product is supported by a guide assembly attached to the jamb construction. No additional header support is required unless hood supports are mandated by a larger opening width.

OPTIONAL MATERIALS AND FINISHES

- ▶ Aluminum in mill, clear and color anodized
- ▶ Stainless steel - 300 series in #4 finish
- ▶ 316 stainless steel in #4 finish
- ▶ SpectraShield® Powder Coating in more than 180 colors
- ▶ For a more durable finish, consider upgrading to our GalvaNex™ Ultra™ or SpectraShield® Ultra™ powder coat finish.
 - It is a polyester based textured wear resistant clear coat that provides increased resistance to corrosion of the curtain and improved durability against normal abrasion and scratching due to cycling.

Brackets, Guides and Bottom Bar

- ▶ Hot-dip galvanizing on steel components
- ▶ Zinc-enriched, corrosion-resistant powder coating in Gray



CUSTOM-DESIGNED SOLUTIONS

Contact our experienced Architectural Design Support Team for help in customizing our products to fit your specific application.

 www.architectdoorhelp.com

800.233.8366 | cornelliron.com

CornellCookson, LLC. is an ISO 9001:2015 registered company
05.2025

CORNELL
Innovative door solutions.™