

INSULATED ROLLING DOOR

# THERMISER® DOOR

Models ESD20 & ESD20W (operational wind-load)



## MAINTAIN TEMPERATURES AND REDUCE SOUND TRANSMISSION

### ENERGY-EFFICIENT CLIMATE CONTROL

Thermiser Insulated Rolling Doors are designed for exterior use and help maintain different temperatures on each side of the door. They are an ideal choice for use in environments that require climate control, security, durability, distribution, industrial, hospitality, retail and other applications.

### PERFORMANCE

Thermiser doors roll up compactly, require little to no maintenance and deliver a low life cycle cost. It can be configured to meet a maximum operational windload of 20 PSF. We also warrant this door for 50,000 cycles as standard.

### SEAL THE BUILDING ENVELOPE

Foamed in place insulation offers superior protection against the elements, improved security and reduced sound transmission. The Thermiser Door helps seal the building envelope and keeps noise in or out.

### PERSONALIZE WITH VIBRANT GRAPHICS

Customize your next Thermiser insulated door with ImageMatch™ Finish! It is a unique ultra violet-cured printing process that produces vibrant, full-color designs. This option allows you to replicate any logo, design or photo with impressive detail.

800.233.8366 | [cornelliron.com](http://cornelliron.com)

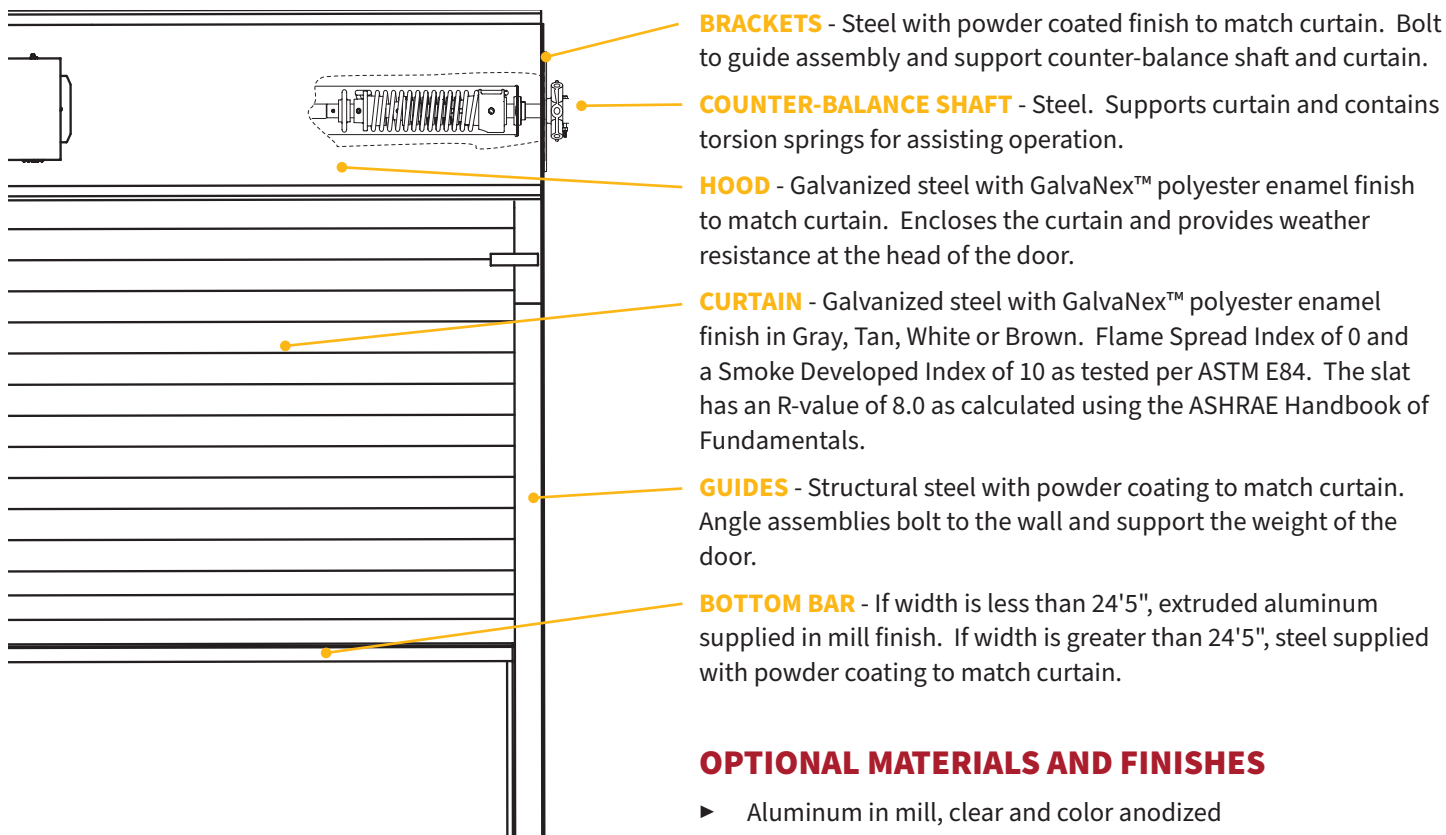
CornellCookson, LLC. is an ISO 9001:2015 registered company

7.2022

**CORNELL**  
Innovative door solutions.®

# INSULATED ROLLING DOOR **THERMISER® DOOR** Models ESD20 & ESD20W (operational wind-load)

## STANDARD COMPONENT MATERIALS AND FINISHES



## OPERATION AND STRUCTURAL REQUIREMENTS

Hand chain, hand crank and a variety of motor options are available.

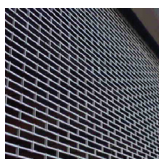
This product is supported by a guide assembly attached to the jamb construction. No additional header support is required unless hood supports are mandated by a larger opening width.

## OPTIONAL MATERIALS AND FINISHES

- ▶ Aluminum in mill, clear and color anodized
- ▶ Stainless steel - 300 series in #4 finish
- ▶ Spectrashield® Powder coating in more than 180 colors
- ▶ For a more durable finish, consider upgrading to our GalvaNex™ Ultra™ or SpectraShield® Ultra™ powder coat finish.
  - It is a polyester based textured wear resistant clear coat that provides increased resistance to corrosion of the curtain and improved durability against normal abrasion and scratching due to cycling.

### Brackets, Guides and Bottom Bar

- ▶ Hot-dip galvanizing on steel components
- ▶ Zinc-enriched, corrosion-resistant powder coating in Gray



## CUSTOM-DESIGNED SOLUTIONS

Contact our experienced Architectural Design Support Team for help in customizing our products to fit your specific application.

 [www.architectdoorhelp.com](http://www.architectdoorhelp.com)