

INSULATED ROLLING DOOR

THERMISER[®] DOOR

Models ESD20 & ESD20W (operational wind-load)



MAINTAIN TEMPERATURES AND REDUCE SOUND TRANSMISSION

ENERGY-EFFICIENT CLIMATE CONTROL

Thermiser Insulated Rolling Doors are designed for exterior use and help maintain different temperatures on each side of the door. They are an ideal choice for use in environments that require climate control, security, durability, distribution, industrial, hospitality, retail and other applications.

PERFORMANCE

Thermiser doors roll up compactly, require little to no maintenance and deliver a low life cycle cost. It can be configured to meet a maximum operational windload of 20 PSF. We also warrant this door for 50,000 cycles as standard.

SEAL THE BUILDING ENVELOPE

Foamed in place insulation offers superior protection against the elements, improved security and reduced sound transmission. The Thermiser Door helps seal the building envelope and keeps noise in or out.

PERSONALIZE WITH VIBRANT GRAPHICS

Customize your next Thermiser insulated door with ImageMatch™ Finish! It is a unique ultra violet-cured printing process that produces vibrant, full-color designs. This option allows you to replicate any logo, design or photo with impressive detail.

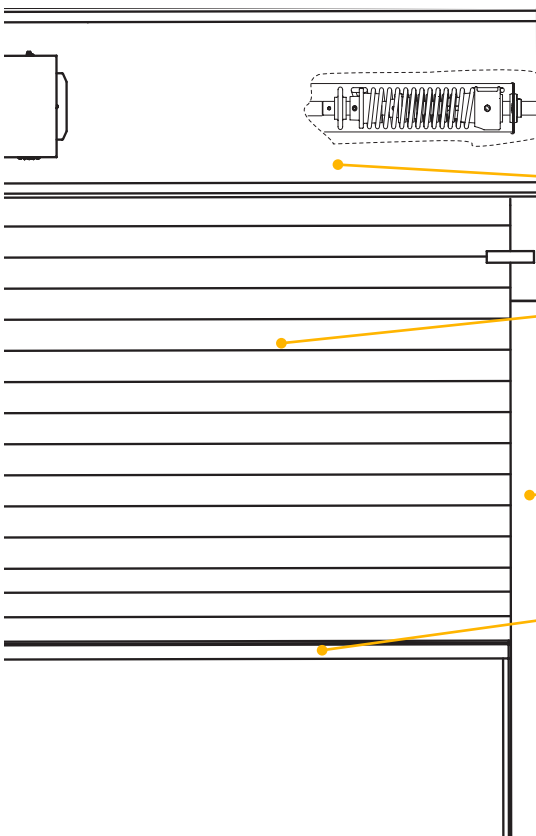
800.233.8366 | cornelliron.com

CornellCookson, LLC. is an ISO 9001:2015 registered company
05.2025

CORNELL
Innovative door solutions.®

INSULATED ROLLING DOOR **THERMISER® DOOR** Models ESD20 & ESD20W (operational wind-load)

STANDARD COMPONENT MATERIALS AND FINISHES



BRACKETS - Steel with powder coated finish to match curtain. Bolt to guide assembly and support counter-balance shaft and curtain.

COUNTER-BALANCE SHAFT - Steel. Supports curtain and contains torsion springs for assisting operation.

HOOD - Galvanized steel with GalvaNex™ polyester enamel finish to match curtain. Encloses the curtain and provides weather resistance at the head of the door.

CURTAIN - Galvanized steel with GalvaNex™ polyester enamel finish in Gray, Tan, White or Brown. Flame Spread Index of 0 and a Smoke Developed Index of 10 as tested per ASTM E84. The slat has an R-value of 8.0 as calculated using the ASHRAE Handbook of Fundamentals.

GUIDES - Structural steel with powder coating to match curtain. Angle assemblies bolt to the wall and support the weight of the door.

BOTTOM BAR - If width is less than 24'5", extruded aluminum supplied in mill finish. If width is greater than 24'5", steel supplied with powder coating to match curtain.

OPERATION AND STRUCTURAL REQUIREMENTS

Hand chain, hand crank and a variety of motor options are available.

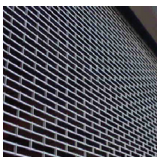
This product is supported by a guide assembly attached to the jamb construction. No additional header support is required unless hood supports are mandated by a larger opening width.

OPTIONAL MATERIALS AND FINISHES

- ▶ Aluminum in mill, clear and color anodized
- ▶ Stainless steel - 300 series in #4 finish
- ▶ 316 stainless steel in #4 finish
- ▶ Spectrashield® Powder coating in more than 180 colors
- ▶ For a more durable finish, consider upgrading to our GalvaNex™ Ultra™ or SpectraShield® Ultra™ powder coat finish.
 - It is a polyester based textured wear resistant clear coat that provides increased resistance to corrosion of the curtain and improved durability against normal abrasion and scratching due to cycling.

Brackets, Guides and Bottom Bar

- ▶ Hot-dip galvanizing on steel components
- ▶ Zinc-enriched, corrosion-resistant powder coating in Gray



CUSTOM-DESIGNED SOLUTIONS

Contact our experienced Architectural Design Support Team for help in customizing our products to fit your specific application.

 www.architectdoorhelp.com