

DEFENDER SERIES

# STOREDEFENDER® DOOR

Models PSD10 & PSD20 (insulated)



## BETTER PROTECTION FOR RETAILERS IN UNCERTAIN TIMES

### BUILT TO PROTECT

The StoreDefender® Door consists of heavy-duty 18 gauge slats that protect against common tool and body force attacks and stay securely in the guides with continuous cast windlocks. To prevent lifting attempts, the slats lock into the barrel and robust slide locks secure the rigid 6-inch Heavy Duty Bottom Bar in place.

### PROVEN PERFORMANCE

The StoreDefender Door was put through intensive testing. To ensure it could withstand heavy impacts and pressures from surges of crowds, the door was “push” tested to 2,500 lbs of force, where it remained securely held in the guides. The door was tested to ensure it could withstand multiple attackers trying to lift it and required 4,500 lbs. of effort to lift the door just 3 inches.

### ADVANCED SECURITY

When immediate protection is required, there's no time to board up your store. A standard StoreDefender only takes about 20 seconds for a 10-foot tall door to close, offering instant security for employees and merchandise. By installing a StoreDefender, there's no need to settle for temporary security solutions that may be expensive and time-consuming to set up.

### ENDLESS VERSATILITY

The StoreDefender is extremely versatile, making it the perfect fit for any storefront or back of house application. It is not only available as a service door, but also as a Thermiser Max® insulated door when environmental separation is required. It is available in all of our standard finishes in addition to more than 180 powder coat colors and can also feature one of our custom graphics to promote store branding.

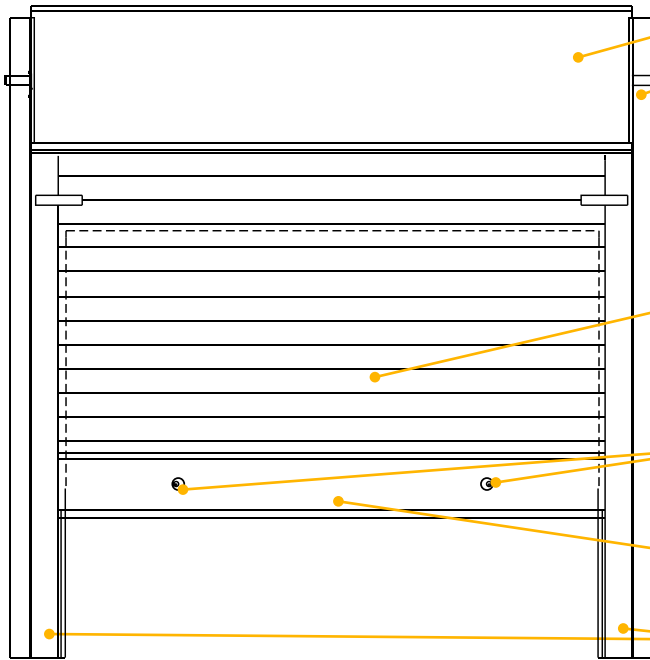
800.233.8366 | [cornelliron.com](http://cornelliron.com)

CornellCookson, LLC. is an ISO 9001:2015 registered company  
8.2025

**CORNELL**  
Innovative door solutions.®

## DEFENDER SERIES **STOREDEFENDER® DOOR** Models PSD10 & PSD20 (Insulated)

### STANDARD COMPONENT MATERIALS AND FINISHES



**HOOD** - Galvanized steel color to match curtain.

**BRACKETS** - Steel with powder coated finish to match curtain. Bolted to guide assembly and support counter-balance shaft and curtain.

**MOTOR** - The MG industrial duty operator is standard. The SG super duty operator is optional for applications requiring over 20 cycles per day.

**CURTAIN** - 18 gauge galvanized steel with GalvaNex™ polyester enamel finish in Gray, Tan, White, Black, or Brown. Interlocking roll-formed slats with continuous endlocks riveted to the ends of the slats.

**LOCKING** - Two hybrid cylinder locks with manually thrown slide bolts via a thumb turn located on each side of the bottom bar.

**BOTTOM BAR** - Robust 6" tall aluminum bottom bar in mill or powder coated finish.

**GUIDES** - Structural steel with powder coating to match curtain. Angle assemblies bolt to the wall and support the weight of the door.

### OPERATION AND STRUCTURAL REQUIREMENTS

#### Manual chain or Motor operation available.

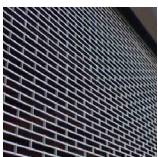
The MG industrial duty operator is standard. The SG super duty operator is optional for applications requiring over 20 cycles per day.

This product is supported by a guide assembly attached to the jamb construction. No additional header support is required unless hood supports are mandated by a larger opening width.

### CERTIFICATIONS & LISTINGS

- ▶ Tested\* to more than 4500 lbs. of effort to lift 3"
- ▶ Tested\* to more than 2500 lbs. for deflection (did not test to failure, bottom bar deflection of 3")

**\*The door used for testing was 14'1" x 10'**



### CUSTOM-DESIGNED SOLUTIONS

Contact our experienced Architect Design Support Team for help in customizing our products to fit your specific application.

 [www.architectdoorhelp.com](http://www.architectdoorhelp.com)