

# ROLLING FIRE DOOR

Models ERD10, ERD11(SmokeShield®), ERD20 (Insulated Firemiser) & ERD21 (Insulated SmokeShield®)



## STOP FIRE AND SMOKE IN ITS TRACKS

### TAILORED FIRE SUPPRESSION SOLUTIONS

Our fire door systems are designed to safeguard lives and property with industry-leading, intelligent operation. These doors:

- ▶ Activate thermally or electrically to contain smoke and fire
- ▶ Reset easily, or even automatically.

### ENHANCED SMOKE PROTECTION

Firemiser model ERD21 is available with the SmokeShield® smoke and draft control package, conforming to UL1784 standards. This ensures that smoke is compartmentalized with the fire, mitigating spread and allowing occupants safe egress.

### CUSTOM-BUILT FOR EVERYDAY USE

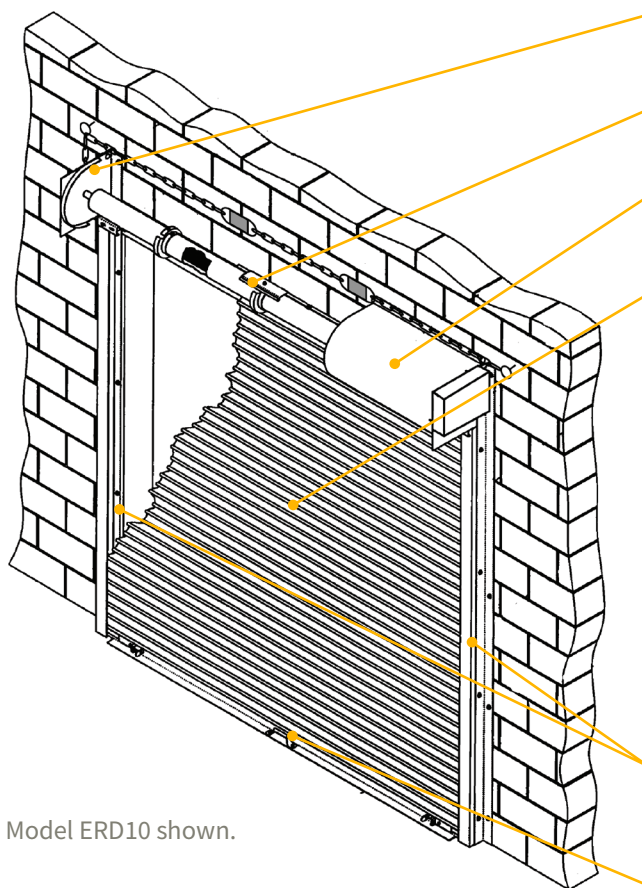
Designed for fire-rated openings, our fire doors offer security and control in openings that are not part of a required means of egress. Fire doors are Factory Mutual Approved, UL listed with fire protection ratings for 3/4, 1 1/2, 3 and 4 hours, and listed with California Office of State Fire Marshal. They are Factory Mutual Approved, listed with California Office of State Fire Marshal.

### FIREMISER INSULATED ROLLING FIRE DOOR

Featuring mineral wool insulation, the Firemiser Door regulates indoor climates and improves sound attenuation. With an R-value of 5.3 and a U-factor rating of 0.189, it's ideal for maintaining distinct interior and exterior temperatures.

## FIRE PROTECTIVE CLOSURES **ROLLING FIRE DOOR** Models ERD10, ERD11, ERD20 & ERD21

### STANDARD COMPONENT MATERIALS AND FINISHES



Model ERD10 shown.

**BRACKETS** - Steel with powder coating to match curtain. Bolt to guide assembly and support counter-balance shaft curtain.

**COUNTER-BALANCE SHAFT** - Steel. Supports curtain and contains torsion springs for assisting operation.

**HOOD** - Galvanized steel with GalvaNex™ polyester enamel finish to match curtain. Encloses the curtain and provides fire protection at the head of the door.

#### **CURTAIN**

##### **FIRE DOOR MODEL ERD10**

Interlocking roll-formed slats of galvanized steel with GalvaNex™ polyester enamel finish in Gray, Tan, White, Black, or Brown. Cast iron end-locks are riveted to the ends of alternate slats to maintain alignment and prevent wear.

##### **FIRE DOOR MODEL ERD20**

Double skin interlocking roll formed slats of galvanized steel, with GalvaNex™ polyester enamel finish in Gray, Tan, White, or Brown filled with mineral wool insulation. Flame spread and smoke development index factors are zero as tested to ASTM E84. Cast iron end-locks/wind-locks are riveted to the slats to maintain alignment, lock curtain into guides, and prevent wear.

**GUIDES** - Structural steel with powder coating to match curtain. Guide assemblies bolt to the wall and support the weight of the door.

**BOTTOM BAR** - Two back-to-back structural steel angles with powder coating in Gray, Tan, White or Brown. Lock mechanisms available.

### OPERATION

**Alarm-activated AlarmGard® and a variety of motor options are the superior choice.**

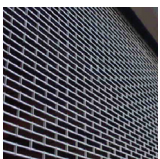
Fusible-link-activated chain, crank or motor options are available for openings that are not in a pedestrian thoroughfare and where electrical activation is not desired.

### OPTIONAL MATERIALS AND FINISHES

- ▶ Stainless steel - 300 series in #4 finish
- ▶ SpectraShield® Powder Coat in more than 180 colors
- ▶ For a more durable finish, consider upgrading to our GalvaNex Ultra™ or SpectraShield Ultra™ Powder Coat finish

#### **Brackets, Guides and Bottom Bar**

- ▶ Hot-dip galvanizing on steel components
- ▶ Zinc-enriched, corrosion-resistant powder coat in Gray



### CUSTOM-DESIGNED SOLUTIONS

Contact our experienced Architect Design Support Team for help in customizing our products to fit your specific application.

 [www.architectdoorhelp.com](http://www.architectdoorhelp.com)