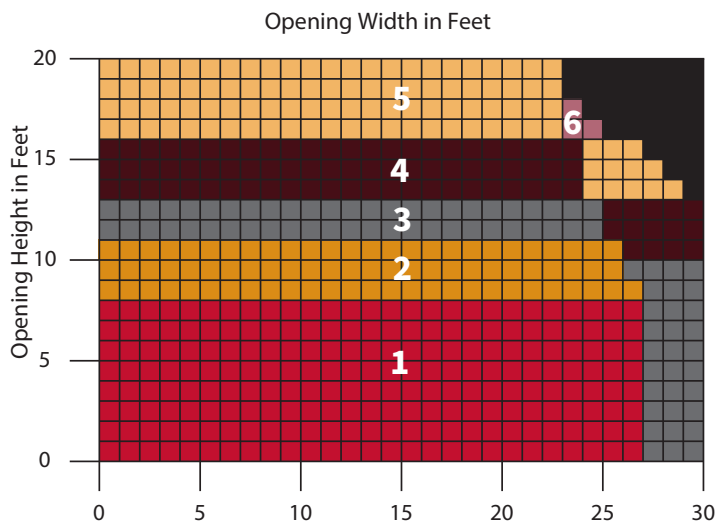


# EXTREME® 1024 HIGH PERFORMANCE DOORS

Models EPD1024 and EPI1024 (insulated)

## MEASURE THE WIDTH AND HEIGHT OF THE OPENING

### NON-INSULATED DOOR SIZE AND AREA



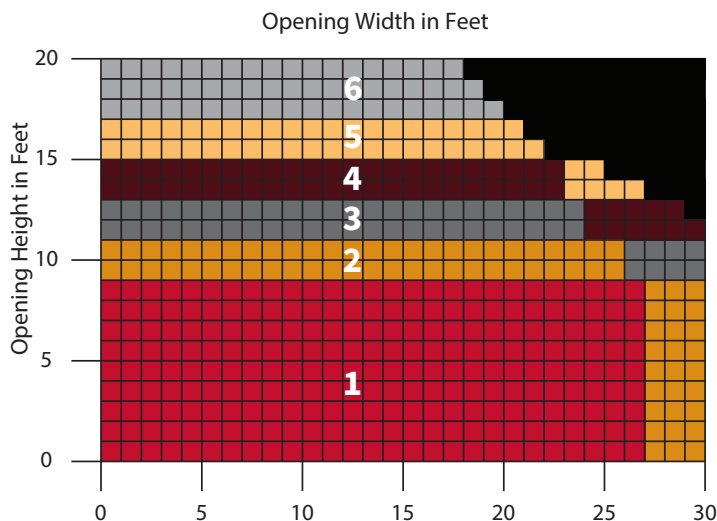
### COMPONENT DIMENSIONS

Reference the zone number to view component dimensions.

Zone	A	B	C	D
1	19	19	9	14
2	20	20	9	14
3	21	21	9	15
4	22	22	9	15
5	23	23	9	16
6	24	24	9	16

Dimensions  
in Inches

### INSULATED DOOR SIZE AND AREA

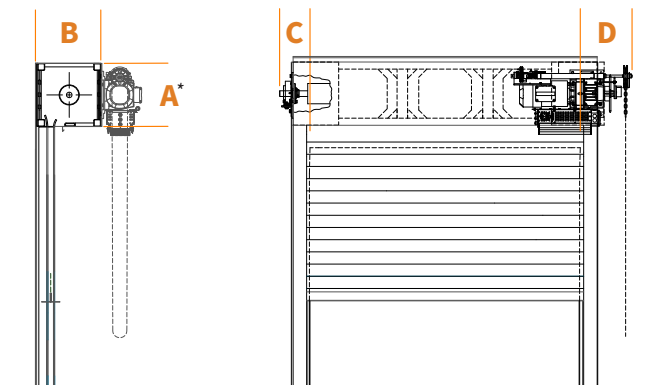


### COMPONENT DIMENSIONS

Reference the zone number to view component dimensions.

Zone	A	B	C	D
1	20	21	10	14
2	22	23	10	14
3	24	25	10	15
4	26	27	10	15
5	27	27	9	16
6	28	28	9	16

Dimensions  
in Inches



The dimensions featured on this sheet are provided as a guide. Please visit our website at [www.cooksondoor.com/drawings](http://www.cooksondoor.com/drawings) to generate drawings on demand with exact dimensions.

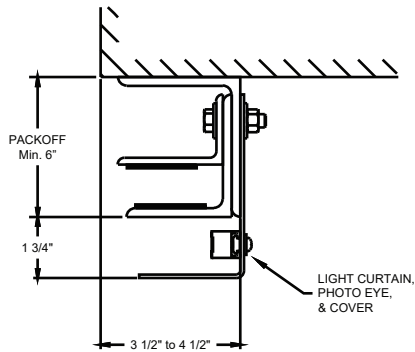
\*On smaller coil doors, the operator may exceed the bottom of dimension A. This will not interfere with the door opening.

HIGH PERFORMANCE LINE **EXTREME® 1024 HIGH PERFORMANCE DOORS**  
Models EPD1024 and EPI1024 (insulated)

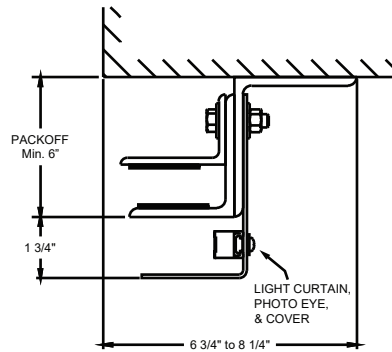
**GUIDE CONSTRUCTION OPTIONS**

**SERVICE DOOR**

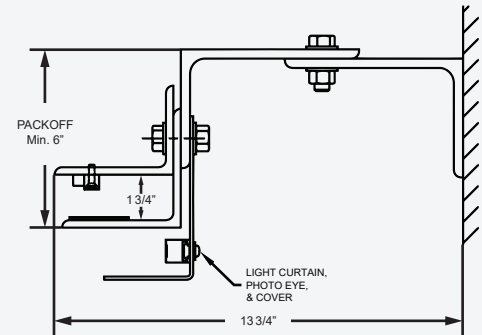
**E GUIDE**



**Z GUIDE**



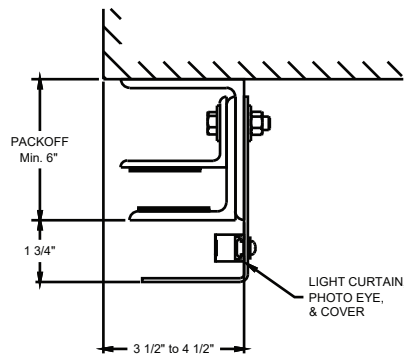
**BETWEEN JAMBS**



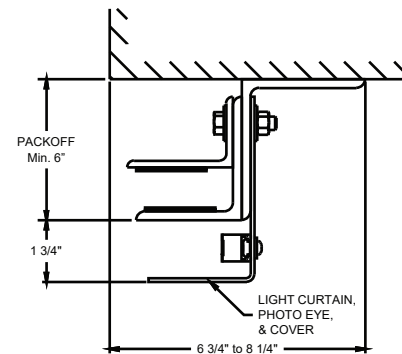
See factory for sizes. May be subject to additional lead times.

**INSULATED DOOR**

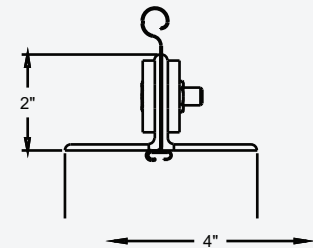
**E GUIDE**



**Z GUIDE**



**BOTTOM BAR**



The dimensions featured on this sheet are provided as a guide. Please visit our website at [www.cooksondoor.com/drawings](http://www.cooksondoor.com/drawings) to generate drawings on demand with exact dimensions.

**CUSTOM-DESIGNED SOLUTIONS**

Our experienced Architectural Design Support Team can customize our products to fit your specific application. Call 800.233.8366 ext. 4551 • [architecturaldesignsupport@cornellcookson.com](mailto:architecturaldesignsupport@cornellcookson.com)