

STORMDEFENDER® DOOR

Models PSD361 & PRSD361 (fire-rated)



SAFE ROOM INNOVATION ENABLES OPEN, AIRY DESIGN

INVISIBLE PROTECTION = DESIGN FREEDOM

The StormDefender® door is big on security and design. How? By being invisible until called into service. The sleek construction allows for virtually undetectable embedment into precast concrete, creating minimal protrusion into the space. In addition, the coil may be hidden above a finished ceiling or into a soffit.

This invisibility allows design freedom – a single door can cover multiple openings or even banks of windows to maximize natural light. With StormDefender Doors, typical safe room spaces – like cafeterias, classroom pods and gymnasiums – can be open and airy instead of dark and claustrophobic. When a storm is imminent, the StormDefender door deploys, automatically turning an open space into an ICC 500/FEMA 361 rated safe room to protect occupants from harsh winds and deadly projectiles. After the event, the door simply disappears back into the structure.

MEETING THE STANDARDS

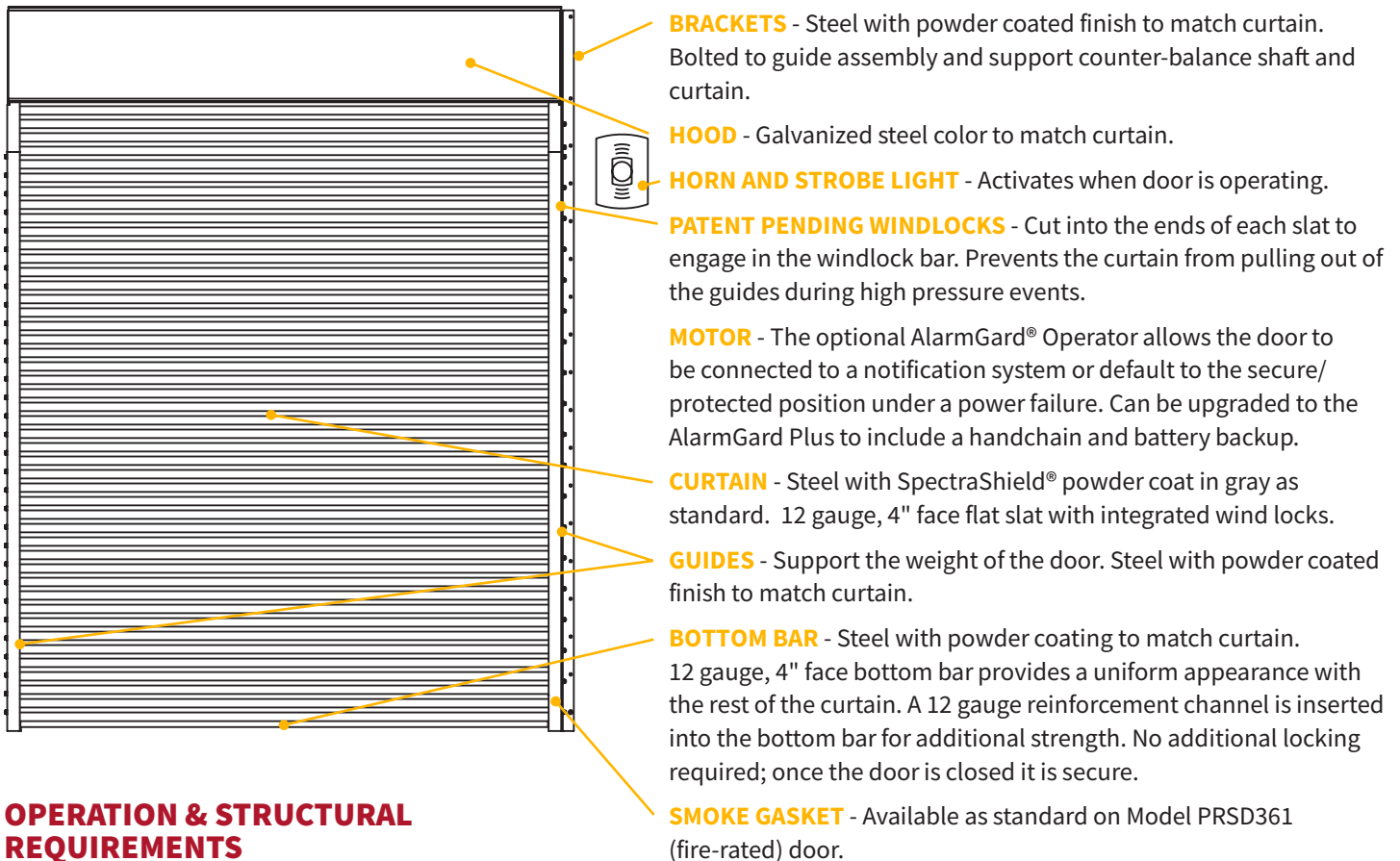
The StormDefender is designed specifically with life safety in mind for safe room protection against tornadoes and hurricanes. Available in fire-rated and non fire-rated models, the door is tested and certified to stringent ICC 500-2020 and FEMA P-361, Third Edition code standards.

BUILT FOR PROTECTION

The StormDefender utilizes our award-winning AlarmGard® system with fail-safe operation. It can be connected directly to the building alarm system – deploying the doors upon activation. In the event a storm knocks out power, the door will automatically close to eliminate one more “to-do.” The heavy-duty slats are held in place with our patent pending curtain design keeping them in the guides even in the strongest of winds. In addition, sound deadening endlocks reduce noise during operation.

DEFENDER SERIES **STORMDEFENDER®** DOOR Models PSD361 & PRSD361 (fire-rated)

STANDARD COMPONENT MATERIALS AND FINISHES



OPERATION & STRUCTURAL REQUIREMENTS

Motor operation required.

The AlarmGard® Operator allows the door to be connected to a notification system. Upgrade to the AlarmGard® Plus to also include a handchain and battery backup. 4000PSI concrete, 1500 PSI grout filled CMU or 36KSI steel jamb construction is required. No additional header support is required unless hood supports are mandated by a larger opening width.

The optional EverGard™ Operator activates the battery backup in the absence of power, which can operate StormDefender up to 10 cycles over 48 hours. Contact factory for more details.

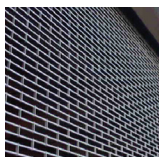
CERTIFICATIONS & LISTINGS

- ▶ ICC 500-2020
- ▶ Miami Dade
- ▶ UL 10B - 3 hour fire rating*
- ▶ FEMA P-361
- ▶ Texas Department of Insurance (TDI)

*Model PRSD361 (fire-rated) only

OPTIONAL FINISHES

- ▶ Stainless Steel
- ▶ SpectraShield® Powder Coating in more than 180 colors
- ▶ AtmoShield® textured powder in 11 colors



CUSTOM-DESIGNED SOLUTIONS

Contact our experienced Architect Design Support Team for help in customizing our products to fit your specific application.

www.architectdoorhelp.com