

ROLLING GRILLES

# STEELWEAVE® METAL MESH GRILLE

Models EAG10C, EAG10V, & EAG10S



## INCREASE VISUAL APPEAL WHILE MAINTAINING SECURITY

### ELEGANT AESTHETICS

The SteelWeave® Metal Mesh Grille complements and enhances any building design while still providing security. SteelWeave's woven stainless steel mesh material is a completely new grille design that exudes elegance. Its patterns transform a standard security item into a piece of rolling art.

### SECURITY

The SteelWeave Metal Mesh Grille features a durable type 316 stainless steel curtain that provides protection for the people or objects behind it while still allowing visibility, even in the most corrosive environments. Optional security features are controlled by a master panel dependent on your choice of operator.

### CONVENIENT MODELS AVAILABLE

SteelWeave Metal Mesh Grille is offered in three convenient models that are customized to meet the needs of your specific application. We offer the Aesthetic Reveal for designs meant to display the entire grille. The Aesthetic Conceal model provides a finished look that buries the perimeter of the grille. The Service model is for those areas that require functionality with a tight weave to eliminate small trespassers. The material, motor recommendation and components will vary based on model.

### APPLICATIONS

The SteelWeave Metal Mesh Grille is ideal for storefronts, malls, bars, restaurants, cafeterias, food processing and all other applications that require an aesthetically pleasing grille. It can also be used as a room or space divider.

800.233.8366 | [cornelliron.com](http://cornelliron.com)

CornellCookson, LLC. is an ISO 9001:2015 registered company

7.2025

**CORNELL**  
Innovative door solutions.™

## ROLLING GRILLES **STEELWEAVE® METAL MESH GRILLE** Models EAG10C, EAG10V, & EAG10S

### STANDARD COMPONENT MATERIALS AND FINISHES BY MODEL

The table below outlines our standard models. Each model is customized to meet your design needs.

	<b>Aesthetic Conceal - EAG10C</b> provides a finished look that buries the perimeter of the grille	<b>Aesthetic Reveal - EAG10V</b> for designs meant to display the entire grille	<b>Service- EAG10S</b> for areas that require functionality with a tight weave to eliminate small trespassers
<b>Guide Finish</b>	Aluminum	Stainless Steel	Aluminum
<b>Bottom Bar Finish</b>	Stainless Steel	Stainless Steel	Aluminum
<b>Motor</b>	Externally Mounted	Concealed Tube Motor	Externally Mounted
<b>Motor Mounting Location</b>	Front of Coil	Inside of Coil	Front of Coil
<b>Motor Cover</b>	No	Yes	No
<b>Hood Finish</b>	N/A	Stainless Steel	N/A

### A CHOICE OF CURTAIN PATTERNS

Two standard curtain designs provide optimum aesthetics, visibility and ventilation.



Lago



Tigris

### UNIQUE END RETENTION PROVIDES...

Windloads withstanding up to:

- ▶ 20 PSF - Tigris
- ▶ 10 PSF - Lago

### OPERATION AND STRUCTURAL REQUIREMENTS

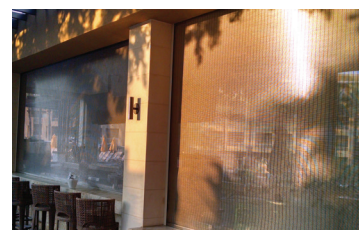
**Motor, hand chain, hand crank and push-up options are available.**

This product is supported by a guide assembly attached to the jamb construction or structural tubes attached to either wall or overhead construction. No additional header support is required unless hood supports are mandated by a larger opening width.

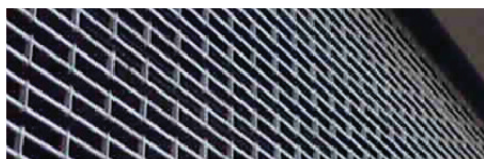
interior bar



exterior bar



interior bar



### CUSTOM-DESIGNED SOLUTIONS

Contact our experienced Architect Design Support Team for help in customizing our products to fit your specific application.

 [www.architectdoorhelp.com](http://www.architectdoorhelp.com)