

ENTRYDEFENDER® DOOR

Model PED0101 (05, 15, 60)



PROTECT YOUR BUILDING FROM THEFT AND VIOLENCE

BEST OFFENSE? GOOD DEFENSE

The EntryDefender® Door protects government buildings, pharmaceutical and cannabis dispensaries, manufacturing facilities, and other sensitive structures from attack for 5, 15 & 60 minutes in accordance with the U.S. Department of State Standard for forced entry SD-STD-01.01, Revision G (Amended) and ASTM F3038 Compliant.

PERFORMANCE

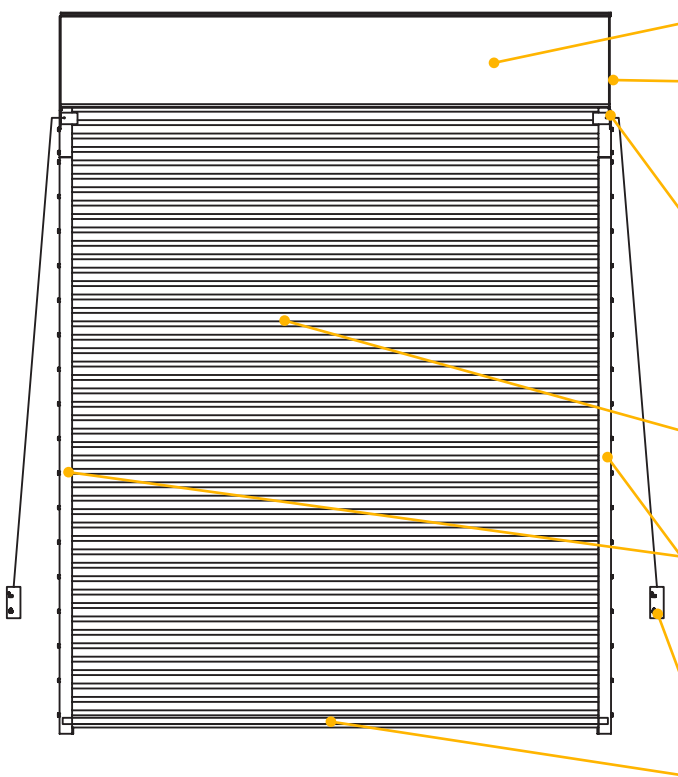
The door is designed to operate to 20,000 cycles (lifetime) as standard, but can be customized to handle additional cycles if desired. In addition, the EntryDefender is designed for a static wind load of up to 125 psf.

DESIGNED TO PROTECT

The EntryDefender's unique design makes the door look average from the outside, but it can absorb persistent, violent attacks. The robust steel curtain features interlocking slats that compress when in the closed position, creating a smooth surface and reducing potential pry points. As an attack persists, the interlocking slats engage and further prevent separation. Its reinforced bottom bar and discreet locking system resists lifting force, making the EntryDefender nearly impossible to defeat.

Model #	Resistance Rating
PED0101 - 05	5 minutes
PED0101 - 15	15 minutes
PED0101 - 60	60 minutes

STANDARD COMPONENT MATERIALS AND FINISHES



HOOD - Galvanized steel color to match curtain.

BRACKETS - Steel with powder coated finish to match curtain. Bolted to guide assembly and support counter-balance shaft and curtain.

LOCK - Manually engaged lock is bolted to the bracket and concealed at the head of the coil to take advantage of the weight.

MOTOR - SG Motor Operator is standard - UL-325 listed with chain and sprocket drive. Includes an interlock to prevent operation while locks are engaged.

CURTAIN - Made up of heavy duty 12 gauge steel interlocking slats that stack upon themselves to resist lifting force and stand up to persistent, violent attacks.

GUIDES - Tube and angle guide with retention bar that features non-exposed fasteners to protect against weak points. Can be mounted to steel or concrete - no CMU.

LOCK LEVER - Can be activated from standing height to manually engage the lock.

REINFORCED BOTTOM BAR - Steel with powder coating to match curtain. Heavy duty 12 gauge, 4" face bottom bar provides a uniform appearance with the rest of the curtain. An 11 gauge reinforcement tube is used to increase bending resistance and prevent prying.

OPERATIONAL AND STRUCTURAL REQUIREMENTS

Motor operation required.

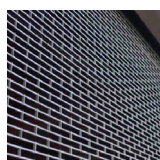
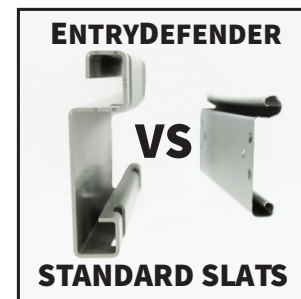
SG Motor Operator is standard. Solid concrete or steel jamb construction is required. No CMU jambs allowed (both filled and non-filled). No additional header support is required unless hood supports are mandated by a larger opening width.

CERTIFICATIONS & LISTINGS

US Department of State Standard SD-STD-01.01, Revision G (Amended) - Forced Entry and Ballistic Resistance of Structural Systems. Rated for 5, 15, and 60 minute attacks. ASTM F3038 Compliant.

OPTIONAL FINISHES

- ▶ Type 304 & 316 Stainless Steel
- ▶ SpectraShield® Powder Coating in more than 180 colors
- ▶ AtmoShield™ textured powder coat in 11 colors
- ▶ CycleShield™ high cycle powder coat offers high abrasion protection



CUSTOM-DESIGNED SOLUTIONS

Contact our experienced Architect Design Support Team for help in customizing our products to fit your specific application.

 www.architectdoorhelp.com