

HEAVY DUTY 5015 ROLLING GRILLE

Model 5015



HIGH-SECURITY, DEPENDABLE AND ROBUST PERFORMANCE

SOLID CONSTRUCTION

The 5015 Rolling Grille curtain is built for the long haul. It consists of solid rods that are spaced 25% closer than standard grille curtain construction. In addition, the links are 50% heavier with tube spacers on every rod, instead of every 10th rod. These upgrades make the curtain more secure and more durable than standard construction.

ENHANCED SECURITY

The 5015 grille's uniquely robust construction is ideal for applications with no secondary level of security, and is built to last for 50,000 cycles. For facilities requiring more cycles, the grille can be upgraded to include 100,000-cycle springs and a high-cycle shaft construction.

COMPACT & FULLY SUPPORTED

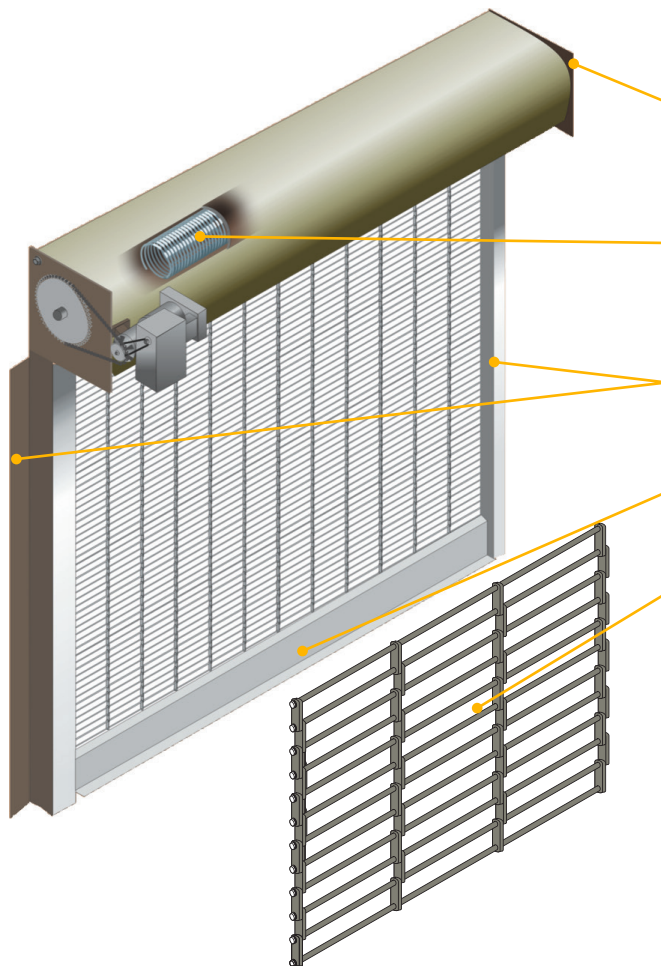
Like all of our rolling products, the 5015 curtain stores in an overhead coil that is totally supported by extensions of the side guides. This means there is no need for any additional support beams at the hood. The coil of the 5015 grille is also compact, requiring less headroom than many standard rolling grilles.

VISIBILITY AND AIRFLOW

The 5015 provides an enhanced level of security compared to standard grilles without sacrificing visibility and airflow. This grille is an excellent choice for retail applications requiring additional protection or parking garages in areas with standard cycle needs.

ROLLING GRILLES **HEAVY DUTY 5015 ROLLING GRILLE Model 5015**

STANDARD COMPONENT MATERIALS AND FINISHES



BRACKETS - Steel with powder coating in Gray. Bolt to guide assembly and support counter-balance shaft and curtain.

COUNTER-BALANCE SHAFT - Steel. Supports curtain and contains torsion springs for assisting operation.

GUIDES - Heavy-duty extruded aluminum in clear anodized finish.

BOTTOM BAR - Extruded aluminum in clear anodized finish.

CURTAIN - $\frac{3}{16}$ " thick aluminum links with $\frac{5}{16}$ " solid aluminum rods spaced $1\frac{1}{2}$ " apart and $\frac{1}{2}$ " diameter composite tube spacers on every rod.

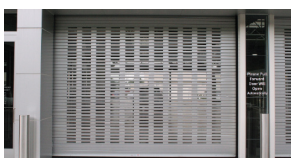
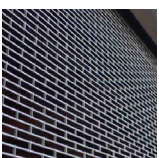
OPERATION AND STRUCTURAL REQUIREMENTS

Motor, hand chain, hand crank and push-up options are available.

This product is supported by a guide assembly attached to the jamb construction or structural tubes attached to either wall or overhead construction. No additional header support is required unless hood supports are mandated by a larger opening width.

OPTIONAL MATERIALS AND FINISHES

- ▶ Aluminum in clear anodized finish
- ▶ Stainless steel - 300 series in #4 finish
- ▶ Hoods available as an option. Galvanized steel with exclusive GalvaNex™ polyester enamel finish in Gray or SpectraShield® Powder Coating in more than 180 colors; aluminum in mill, clear and Dark Bronze Anodized Finish and Black Anodized Finish; or 300 series stainless steel with a #4 finish



CUSTOM-DESIGNED SOLUTIONS

Contact our experienced Architect Design Support Team for help in customizing our products to fit your specific application.

 www.architectdoorhelp.com